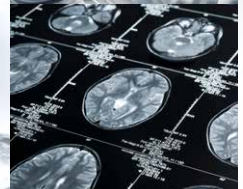




Nano-Line

Small chiller - Big effect!



Nano-Line

With the small but robust stand-alone chillers from the Nano-Line, KKT chillers takes the heat off your industrial cooling needs. The easy-to-read level indicator reliably indicates the min. and max. levels of the coolant. Pre-assembled lifting rings ensure easy transport. Equipped with a programmable control module, every nBoxX enables high temperature stability of the cooling medium. Therefore, the chillers of the Nano-Line represent the all-round solution for a large variety of applications in the 1.7 - 6.5 kW power range.

BASIC CONFIGURATION

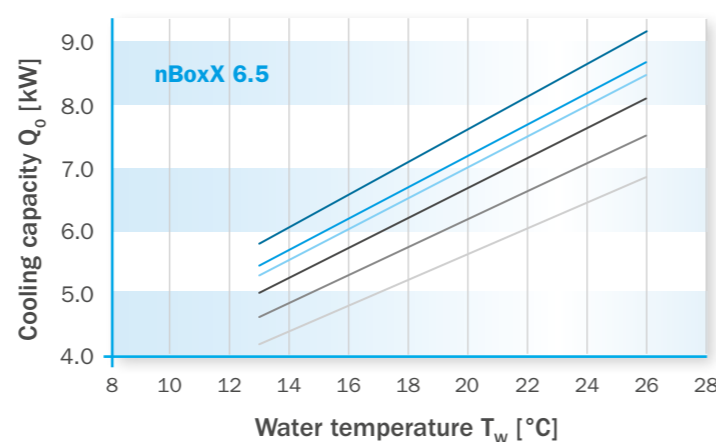
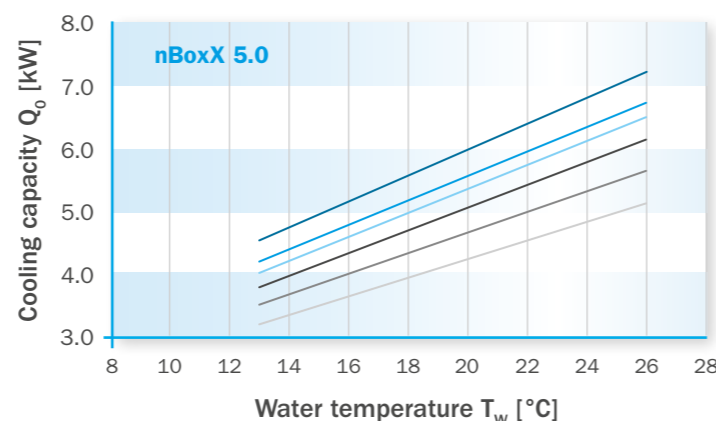
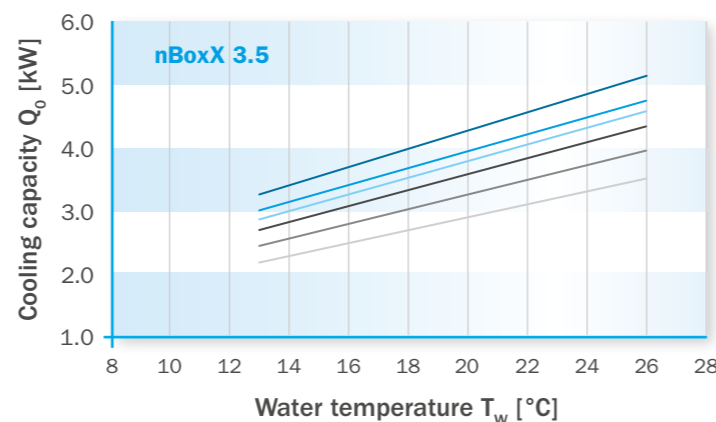
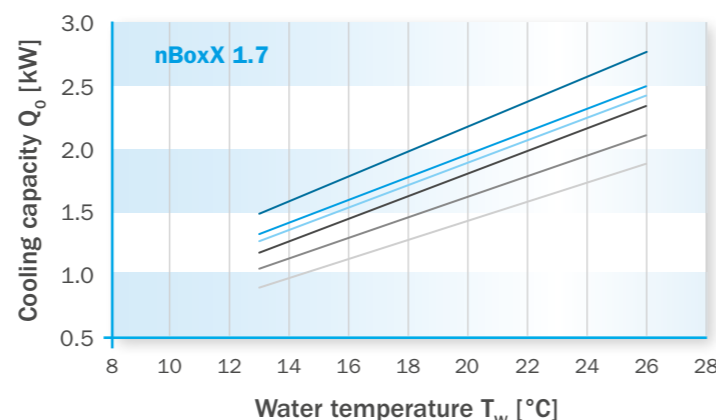
- ✓ Overflow valve for free adjustment of the pressure in the water circuit
- ✓ Tank level switch for monitoring the water level in the tank „Dry running protection of the pump“
- ✓ Flow switch - adjustable flow monitoring (minimum permissible flow)
- ✓ Error indication on the display
- ✓ Temperature difference control - freely adjustable flow temperature via display
- ✓ Wire labeling
- ✓ Potential-free indicator for collective fault message

OPTIONS

- ✓ Hot gas bypass to improve the temperature accuracy to +/- 1K
- ✓ Harting plug for power supply and single alarm
- ✓ Aluminium air filter kit
- ✓ Castors
- ✓ Contact for remote control

Capacity curves

Ambient temperature T_{amb}
 ■ 25 °C ■ 30 °C ■ 32 °C ■ 35 °C ■ 40 °C ■ 45 °C



Technical data

Nano-Line	nBoxX 1.7	nBoxX 3.5	nBoxX 5.0	nBoxX 6.5
Net cooling capacity ¹⁾	1,7 kW	3,5 kW	5,0 kW	6,5 kW
Refrigerant	R134a			
GWP	1430			
Refrigerant filling	0,8 kg	1,5 kg		
CO ₂ equivalent	1,14 t CO ₂	2,15 t CO ₂		
Ambient temperature range	15 °C – 45 °C			
Max air flow rate	1.300 m ³ /h	2.300 m ³ /h		
Coolant	Water and Glycol 80/20			
Tank volume	10 l	26 l		
Coolant outlet temperature	13 °C - 35 °C			
Temperature constancy	+ / - 2K			
Coolant flow	0,3 m ³ /h	0,8 m ³ /h	1,0 m ³ /h	1,1 m ³ /h
Pumping pressure	3 bar			
Sound pressure level ²⁾	<62 dB(A)			
Operating voltage (±10%)	230 V/3Ph/50/60 Hz	3x 400 V/3 Ph/50 Hz + 3x 460 V/3 Ph/60 Hz		
Operating current	6,5 A / 7,5 A	6,5 A / 7,0 A	8,0 A / 8,5 A	9,5 A / 10,0 A
Power consumption	1,3 kW / 1,5 kW	2,5 kW / 3,1 kW	3,4 kW / 4,2 kW	4,1 kW / 5,0 kW
Protection class	IP54			
Water connections	1/2" IG	3/4" IG		
Dimension (BxHxL)	546 x 634 x 600 mm	727 x 983 x 600 mm		
Weight ³⁾	67 kg	109 kg	111 kg	114 kg
Color	RAL 7035			

¹⁾ at tw=18°C, tamb=32°C, 50Hz, with pump | ²⁾ at 50 Hz, according to EN ISO 3741 | ³⁾ without packaging and charge of coolant

The two sizes at a glance:





For frequently updated contact information of the individual service locations, please see

www.kkt-chillers.com/en/service/service-locations/



Nano-Line



24/7

Customer Support

KKT chillers Germany

ait-deutschland GmbH
Industriestraße 3
95359 Kasendorf

T +49 9228 9977 0
F +49 9228 9977 149
S +49 9228 9977 7190
E info@kkt-chillers.com

KKT chillers USA

KKT chillers, Inc.
765 Dillon Drive
Wood Dale, IL 60191

T +1 847 734 1600
F +1 847 734 1601
TF +1 866 517 6867
E sales@kkt-chillersusa.com

KKT chillers East Asia

Sales and Service Office
5-1-D, No. 333 Xingpu Road
Modern Industrial Park
Suzhou 215021, Jiangsu Province, P.R.C.

S +86 512 6790 3091
F +86 512 6287 1077
E info@kkt-chillerscn.com

kkt-chillers.com

KKT chillers - a brand of ait-deutschland GmbH

 Made in Germany