



2019 Service Series

Eco Series, Compressor 2 Jumper Removal



what is needed

- Small precision flat head screw driver
- Chiller Key- Square



step 1, panel removal

Remove door panels with Chiller Key- Square 



Remove door panel 1.



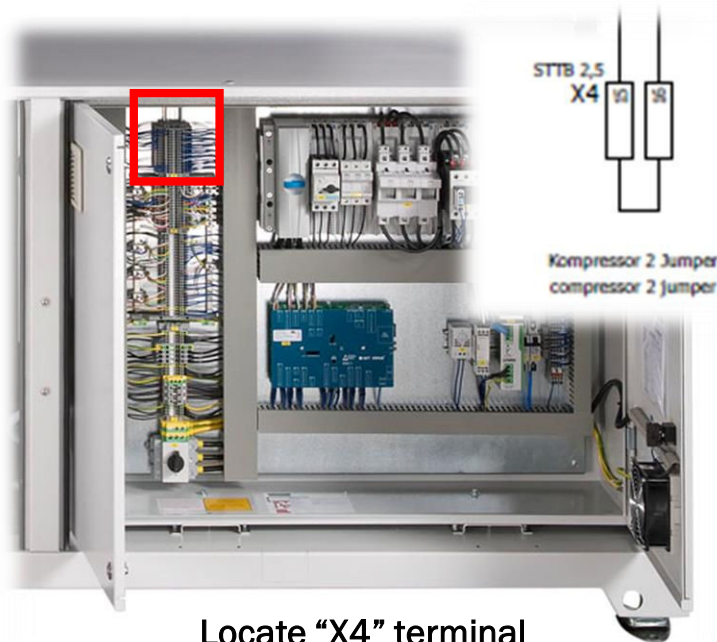
Open door panel 2,
door panel 2 is behind door
panel 1.



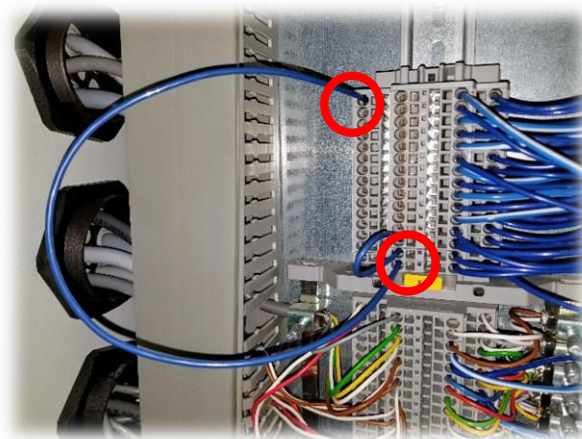
Turn off chiller power at "4Q1".
It should be on the "0"
position.

Jumper removal

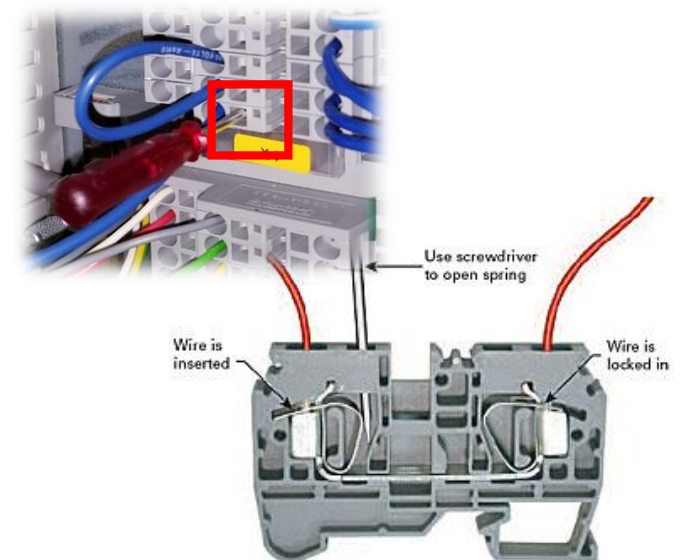
Remove jumper with small precision flat head screwdriver.



Locate "X4" terminal block and find terminals 15 and 16.



Remove jumper from the left of the terminal block.

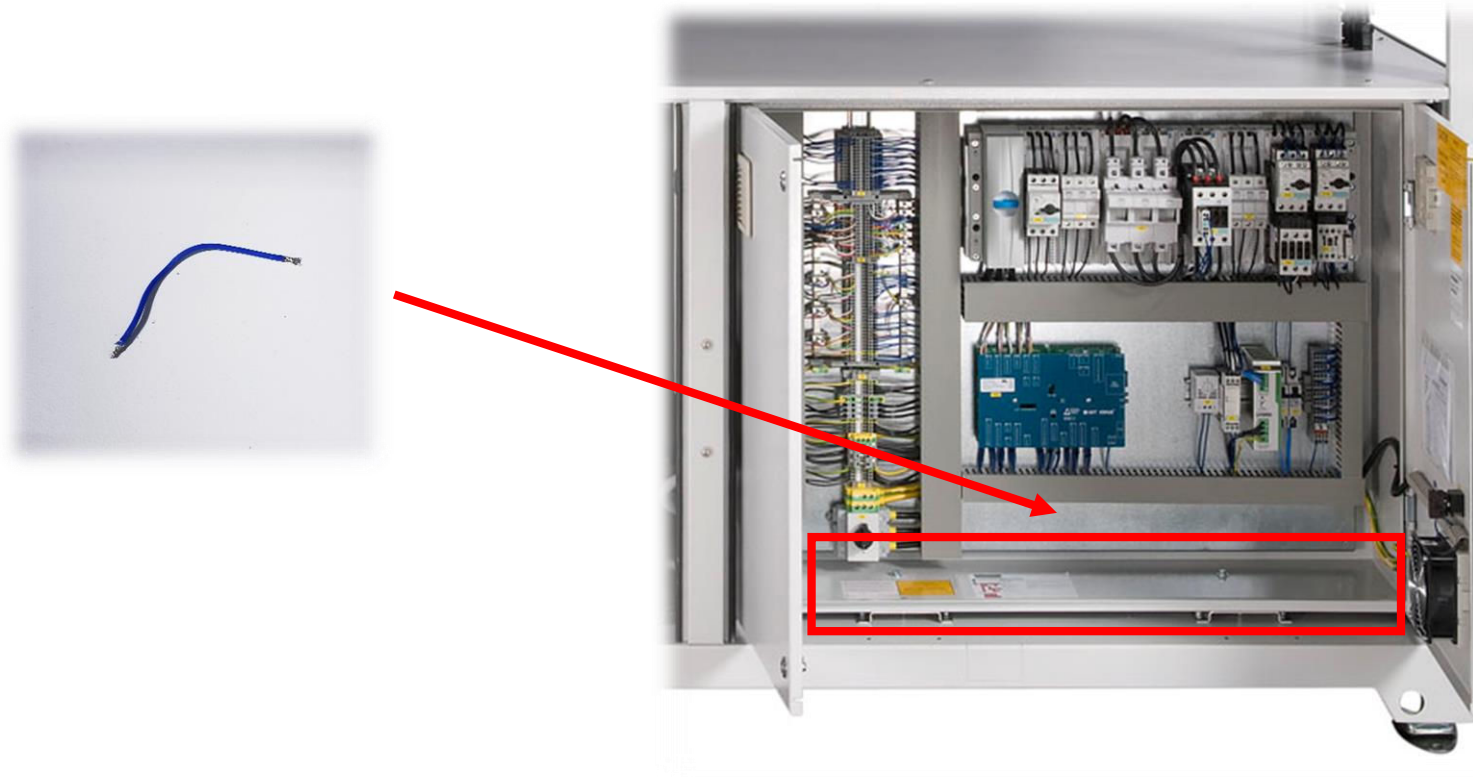


Place precision flat head screwdriver in the square slot next to the wire that is landed. Be sure to keep the screwdriver in the slot when removing the wires to keep the spring clamp from locking the wire in the terminal.

Jumper placement after removal

Please removed jumper anywhere near the bottom of the cabinet for future enabling.

TIP: You may want to label the wire so that it isn't discarded during PM's or other services.



chiller operation



During the “Night Mode” sequence, the big 45 KW blue compressor should begin to run.

It will run at 50% speed with a temperature swing.

Compressor On- 26 Celsius

Compressor Off- 19 Celsius

