

Spare Parts KPC 115L-U/S, KPC115L-S

KPC 115L-U/S, KPC 115L-S

KKT Water Chiller for

ONCOR Avant-Garde Linear Accelerator

ONCOR Impression PLUS Linear Accelerator

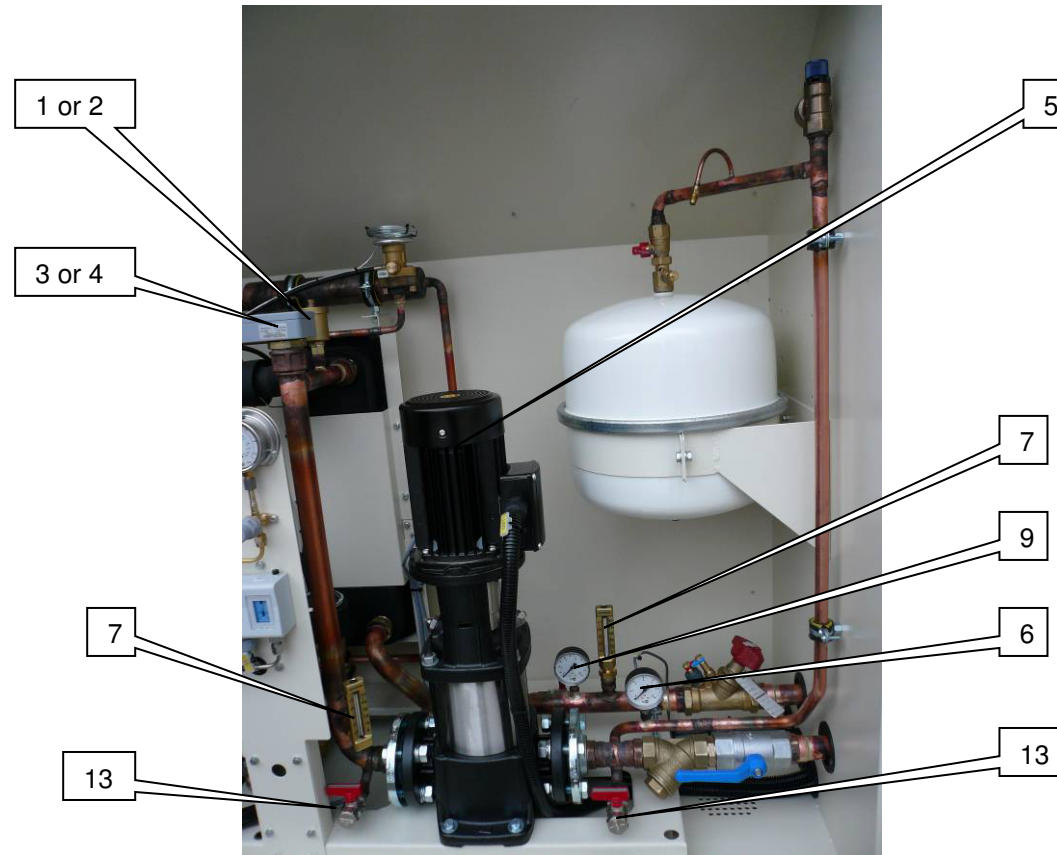
PRIMUS PLUS Linear Accelerator

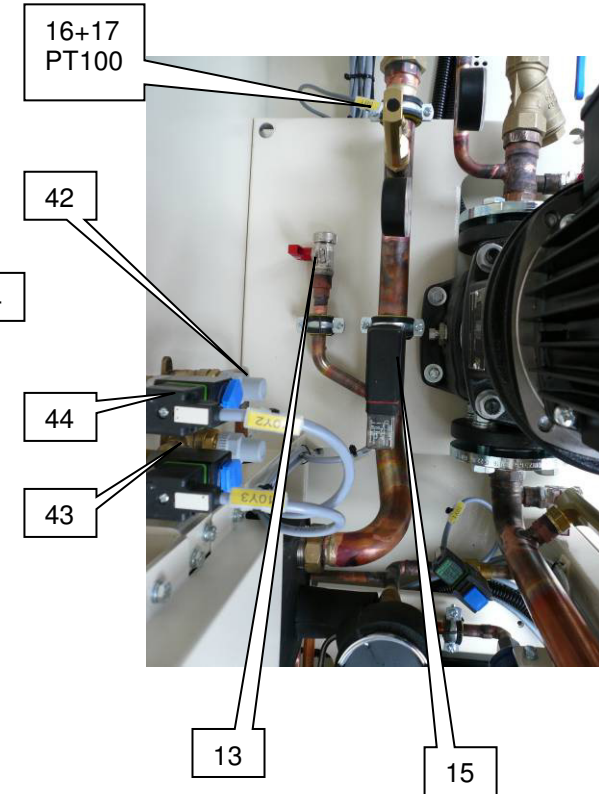
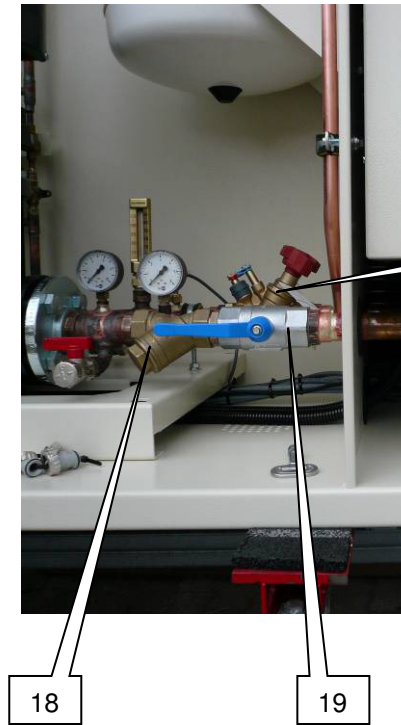
ONCOR Impression Linear Accelerator

PRIMUS Linear Accelerator



KPC 115-L-U/S (480V/3P/1V/60 Hz)



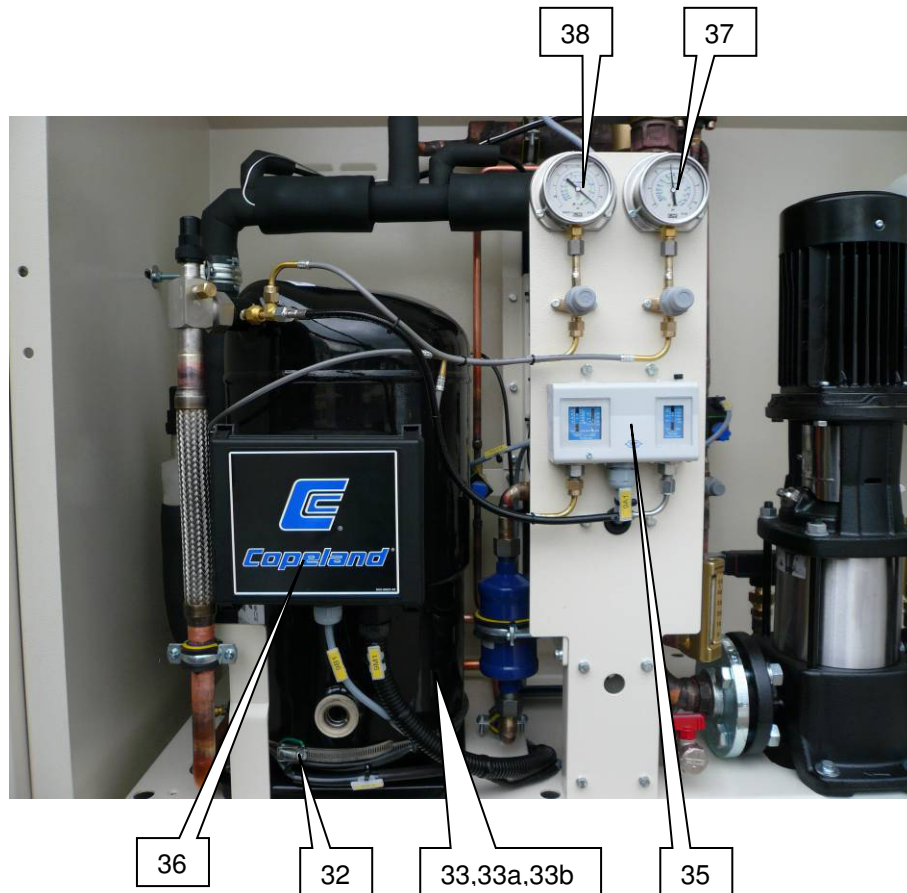


Spare Parts KPC 115-L-U/S, KPC115-L-S

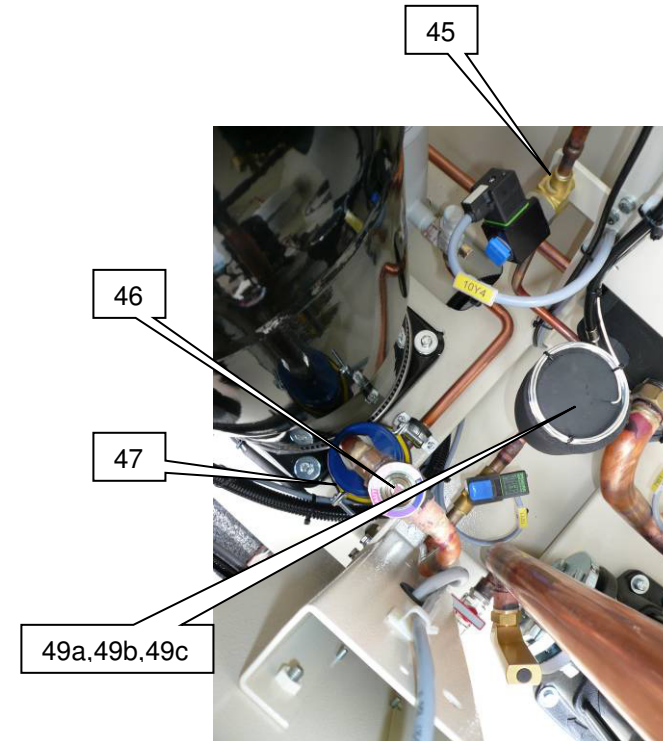
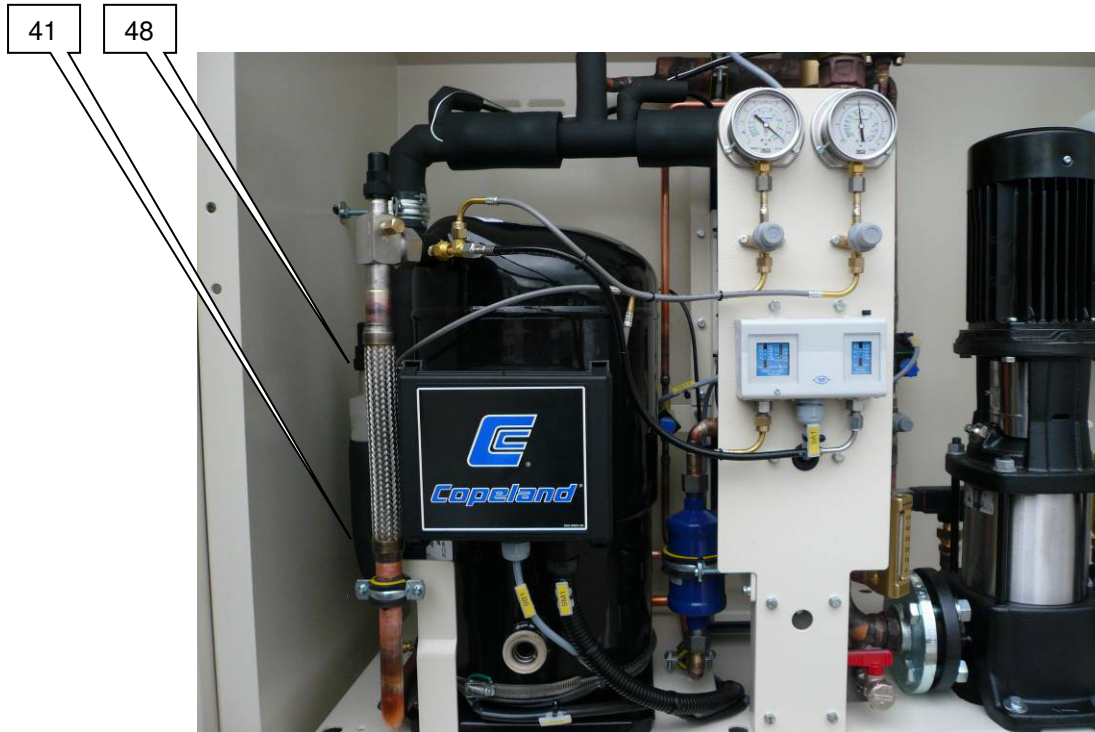


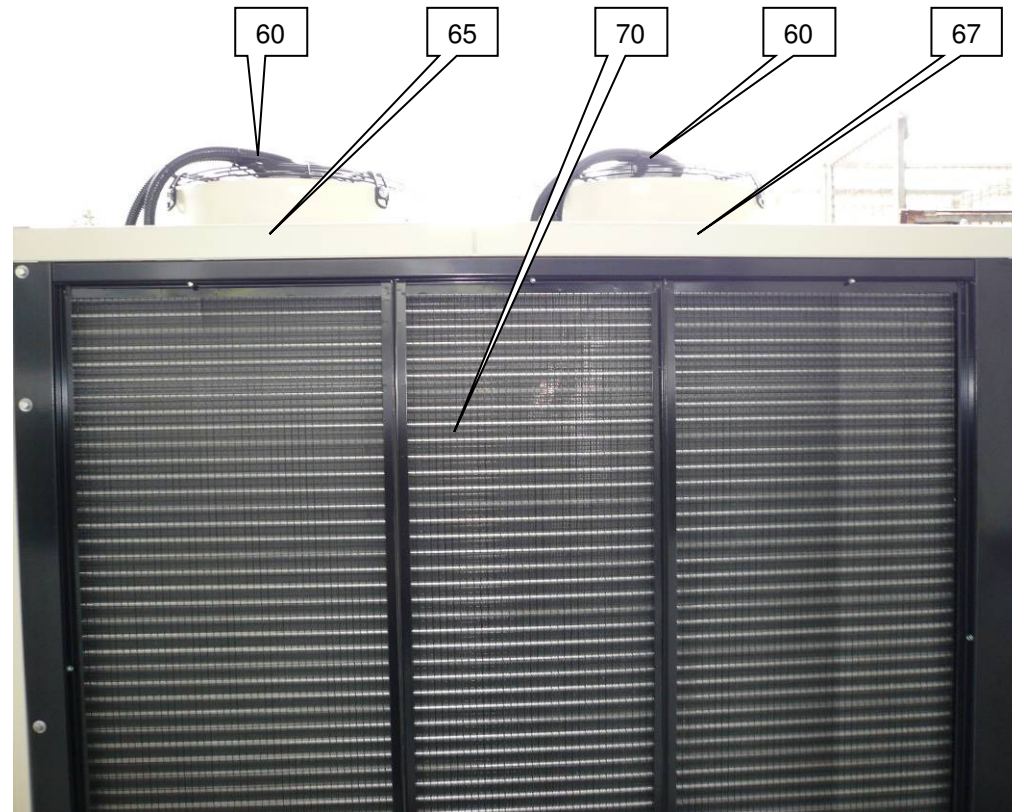
number	description	type	electrical item designation	number scheme	SAP	PDS	remarks
1	air bleeder automatic (Braukmann 1/8-3/8)	EA122 54632 SEB		141	65493601	382002	
2	air bleeder automatic (Braukmann Messing/brass)10bar			141	65493301	381001	
2a	socket for air bleeder No.:2			141	65493401	381010	
3	water heater 230V/800W	1661/0105	5E1	163	65060001	212201	
4	water heater 230V/800W		5E1	163			the same as Pos: 3
5	high pressure rotary pump 480V/60Hz	CR3-9U	6M1	100	65530801	387109	IE3 ???
5a	high pressure rotary pump 400V/50Hz	CR3-12	6M1	100	65531801	387119	IE3 ???
6	pressure gauge 0-6 bar 1/4" connection rear	M 6386H or 1484.074.003 water 0 - 6 bar		37	65494301	383041	
7	straight thermometer 110x30mm	G3200 0-50 °C		134	65498001	384031	
8	angle thermometer 110x30mm	W3201 0-50 °C		134	65497901	384030	
9	pressure gauge water 0-10 bar 1/4" connection lower	M 63810 or 1482.075.003 0-10 bar 1/4" water		37	65493801	383002	
10	safty valve 6bar 3/4" - 1"	SVS206 or 28578		108	65457101	374100	
11	air fix & relief valve (241100) (shut off valve 3/4" for-expansion tank)	KV 2020		125	65465701	376101	
12	expansions receiver	A25 Airfix		104	65458501	375020	
13	ball valve (drain and fillin valve red handle bar)	KFE DN 15 (KFEKV)		128	65445101	371100	
14	TA-balance valve (flow regulating valve) without insulation	STAD DN 25		111	65433101	369022	
15	flow-control	Sika-VHS07M2KKTKR01	7B1	137	65471701	377122	Origin Label
16	temperature sensor	TF PT-100 ID-Nr. 195685 (4m)	8B1	138	65878301	453011	please order KKT- 65124601also

number	description	type	electrical item designation	number scheme	SAP	PDS	remarks
17	swagelock screw connection 1/4"	B-6M0-1-4RT BT			65124601	314001	please order KKT-65124601 also
18	filter strainer	SFM32		122	65462901	376004	
19	ball valve with handle	MLG - V 032-7		124	65446101	371134	



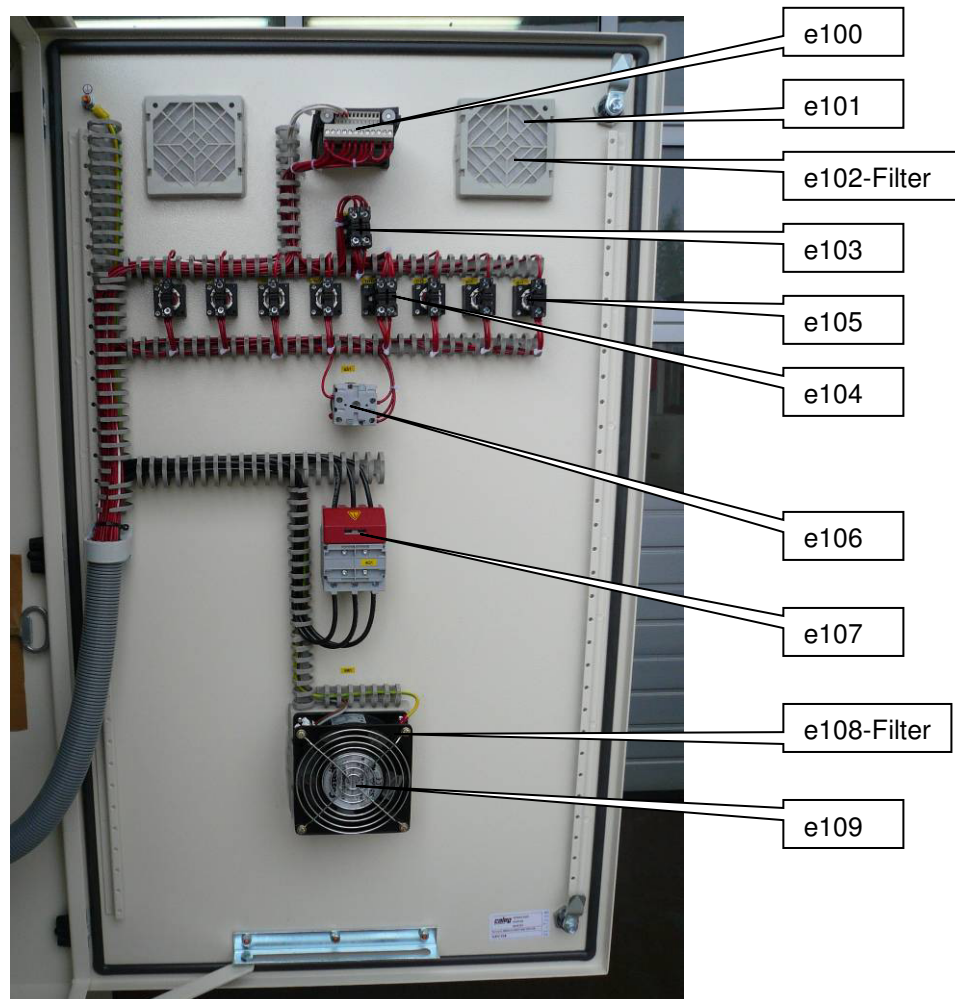
Located behind the compressor:



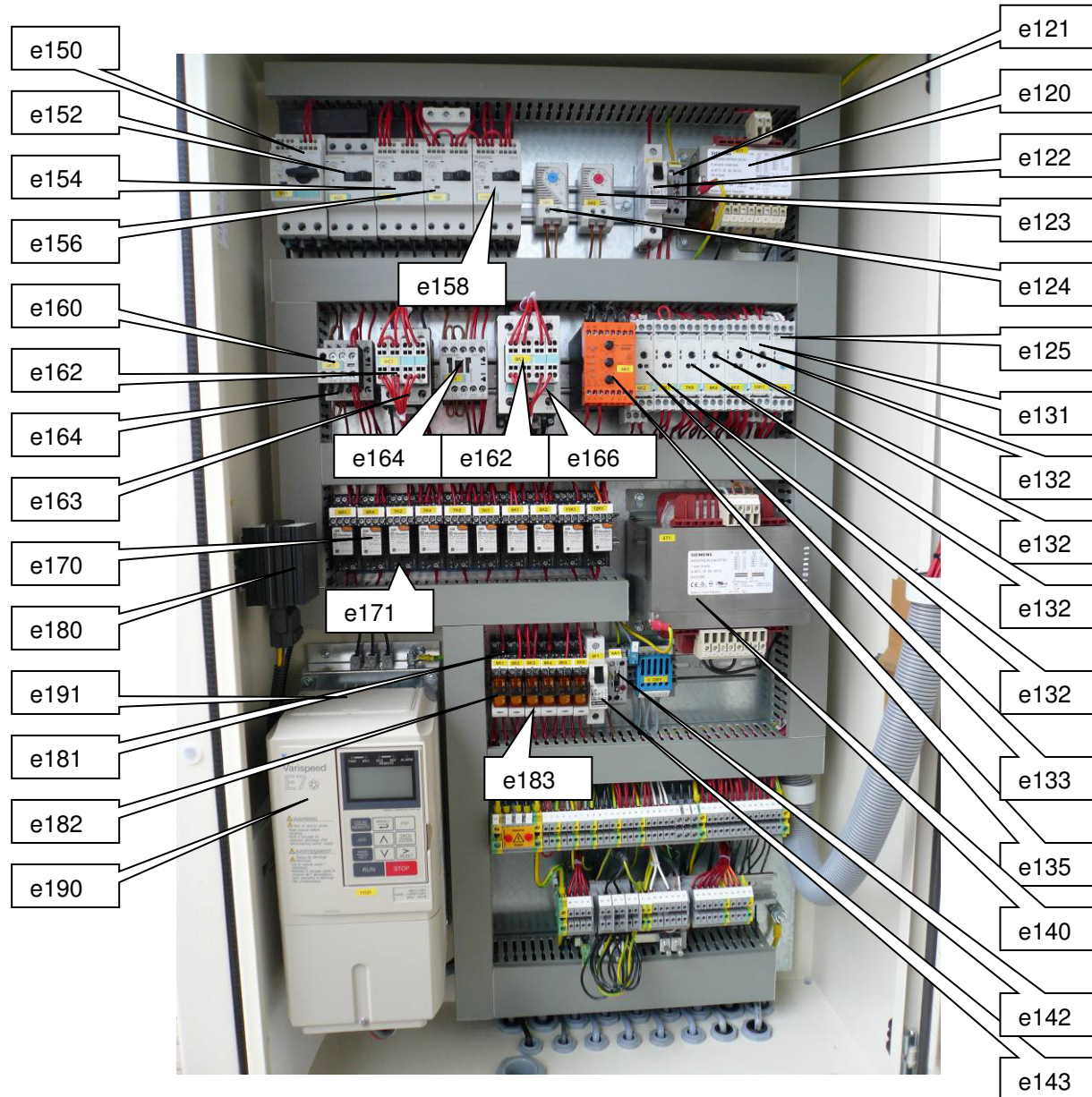


number	description	type	electrical item designation	number scheme [C4175]	SAP	PDS	remarks
32	bullet casing heating	240V (ZR 90 - ZR 19)			65994001	501856	
33	compressor	ZR 16 M3E TWD 561 winding protector(INT69)	9M1	1	65986201	501123	Not available
33	compressor	ZR160KCE-TFD650			67058501		
	Compressor replacement Kit	for ZR160			928034		
33a	compressor	ZR 19M3E TWD 561 winding protector(INT69)	9M1	1	65986301	501124	Not available
33a	Compressor	ZR190			6700586		
	Compressor replacement kit	for ZR190			928040		
34	shutt off valve (refrigerant circuit)	6012/22 (180020)			66092901	532426	
35	pressure switch dual mode (Alco)	PS2-C7A PCN: 4353500	9B1	38/39	66056901	525130	Origin Label
36	compressor protection equipment	motor protection INT 69, 24 V AC 50/60Hz			65995001	501902	
37	low pressure gauge	111.60.00.02384 or 110-063-D-000004 -1 / 9 bar cold		37	66115601	544001	
38	high-pressure gauge	111.60.00.02383 / 110-063-D-000003 -1 / 32 bar cold		37	66115701	544002	
40	Evaporator	M 25 x 40 GL		3	66159801	580914	
41	check valve (non return valve refrigerant)	NRV19 S22 020-1054		10	66082901	532052	
42	shutt off valve (refrigerant circuit)	6420/M10			66090401	532400	
44	alco solenoid coil / AC	ASC-24VAC (VDE 0580) PCN:801 062	10Y1,10Y2	16	66042601	522050	Origin Label
45	magnetic valve without coil	200RB6T5 (PCN801186)		16	66041101	522006	Origin Label
47	filter-dryer 16mm	ADK-Plus 165		32	66067901	530025	
49a	alco angle flange 16x22mm	A 576		17	66032801	515383	
49b	alco cage assembly (inlet)	X22440B7B		17	66028201	515307	
49c	alco power assembly (TOP)	XB 1019MW-1B		17	66022101	515200	Origin Label
60	condenser fan 400V/50Hz D/Y 460V/60Hz D/Y	FE 050-VDD.4.1.6/UL	11M1, 11M2		65052401	207020	Origin Label
65	fan-mounting plate (small nozzle)	00342657			65055901	207901	
67	fan-mounting plate (nozzle)	00284886			65056101	207903	
70	condenser refrigerant SIGLA V24+200	Typ 2522 C01 46 04 22 1410 23A		4	66155101	573121	
75	wind guard/wind baffle	f. KPC115		-	66582301	802701	without picture

number	description	type	electrical item designation	number scheme	SAP	PDS	remarks
49a	alco angle flange 16x22mm	A 576		17	66032801	515383	
49b	alco cage assembly (inlet)	X22440B7B		17	66028201	515307	
49c	alco power assembly (TOP)	XB 1019MW-1B		17	66022101	515200	Origin Label
49a	alco angle flange 12x16mm	A 501-7		17	66033301	515388	
49b	alco cage assembly (inlet)	X 22440-B3,5B		17	66027801	515303	
49c	alco power assembly (TOP)	XB1019 GL 2B		17	66026901	515291	Origin Label



Pos.:
e115 LED-lamp-red (10 pcs.)
e116 LED-lamp-white (10 pcs.)



Spare Parts KPC 115-L-U/S, KPC115-L-S



number	description	type	electrical item designation	number scheme [C4175]	SAP	PDS	remarks
e100	six-stage thermostat (old typ ..NW...)	ST710-PWHVM.26	8N1		65901501	459100	from serial .017. Origin Label
e100	temperature controller (Eliwell)	EWPC 905/T1C2BCC500	8N1		65784601	445401	until serial .017. Origin Label
e101	plastic-grating IP 54 105 x 105 x 22 mm	100030			66582501	802731	
e102	exchange filter for PF/PFA 1000, 85 x 85mm 150g/m ²				66489501	692010	
e103	push-button-red 1Ö Ba9s	3 SB 32 07 - 0AA21	7S2		65696401	423150	
e104	push-button-red 1Ö Ba9s	3 SB 32 07 - 0AA21	7S1		65696401	423150	
e105	pushbutton lampholder BA9S red, complete unit (rund illuminated)	3SB 3204-6AA20	7S1		65690901	423001	
e106	control switch (Remote/ON/OFF) panel mounted	U1/8ZM/NS/X70A/F643	6S1		67066101		
e107	main switch	NLT40/3E/Z33/X72/F803	4Q1		65618101	405101	Origin Label
e108	exchange filter for PF/PFA 2000, 115x115mm 350g/m ²				66489601	692011	
e109	cabinet fan IP54 150x150x71 with UL 230VAC (100014)	FPF12KR230BE-110	5M1		66582901	802751	Origin Label
e115	accessories for 3SB3 LED lamp, base BA 9S 24V AC/DC, red packing (preferred type)	41 5309 2411			65693101	423034	10 pieces
e116	accessories for 3SB3 LED lamp, base BA 9S 24V AC/DC, white (preferred type)	3SB 3901-1QA			65693301	423036	10 pieces
e120	transformator 24V 160 VA Primär : 208...550 V Sekundär : 24 V EN 61558	4AM38 42-8DN00-OEA0	4T1		65681301	421011	Origin Label
e121	Earth-clamp 24...48V	GTF 76/48 31 21 02 5	4A2		65558001	401150	
e122	min. circuit breaker 400V 6KA, B-characterist., 1 pole, 6 A/ N-Type AC	1BU6	4F1		65624001	406011	Origin Label

number	description	type	electrical item designation	number scheme	SAP	PDS	remarks
e124	cabinet thermostate 0...60 °C 1NC (cooling) UL approval 230VAC	1147NO	5B1		66589601	803802	
e125	thermistor motor protection standard evaluation unit manual, 1NO+1NC, DC 24V screw connection (preferred type)	3RN1011-1CB00	11F1		65699301	423510	Origin Label
e131	Compressor time relay start help	3RP1525-1BP30	10K1		65686001	421441	Origin Labe
e132	time relay (on-delay) 1W 24/230VAC	3RP1525-1AP30	7K3;7K6 9K4-9K5		65685901	421436	Origin Label
e133	time relay (off-delay) 1W 24/230VAC with auxiliary voltage	3RP1505-1AP30	6K2		65685701	421431	Origin Label
e135	phase sequence relay	ASN2450 424 07	4A1		657955B01	445802	Origin Label
e140	transformer 230V 1000 VA Primär : 208 - 550 V 50/60Hz Sekundär : 2 x 115 V EN 61558	4AM5742-8DD40-0FA0	5T1		65681801	421042	Origin Label
e142	Earth-clamp 110...230V 10 Stck/Pck	GTF 76/230 31 21 01 2	5A1		65558101	401151	
e143	automatic fuse C4A	1CU4 EN60898	5F1		65624901	406109	Origin Label
e150	circuit breaker 20,0...25,0A size S0 motor protection class 10, screw connection, standard breaking capacity (preferred type)	3RV 1021-4DA10	9Q1		65664601	420360	Origin Label
e152	circuit breaker 0,7...1,0A, size S00 motor protection class 10, screw connection, standard breaking capacity (preferred type)	3RV 1011-0JA10	4Q2		65661201	420210	Origin Label
e154	circuit breaker 2,8...4,0A, size S0 motorprotection class 10, screw connection, standard breaking capacity (preferred type)	3RV 1021-1EA10	5Q1		65662901	420271	Origin Label

number	description	type	electrical item designation	number scheme	SAP	PDS	remarks
e158	circuit breaker 3,5...5,0A, size S00 motor protection class 10, screw connection, standard breaking capacity (preferred type)	3RV 1011-1FA10	11Q1		65663101	420280	Origin Label
e160	snap on relay 22 E DIN EN 50 012 (1S / 2 Ö) size S00	3 RH 19 11 - 1HA12			65668201	420611	
e162	slaveswitch 1 - pol 1 Schließer size S0 - S3 with Cage clamp-Anschluss	3 RH 19 21 -2CA10 Nachfolger: 3RH2911-2HA10	6K3; 9K3		65669701 65667601	420661	
e163	contactor AC-3 4KW/400 V AC24V, 50/60 Hz, 3-pole, size S0, screw connection mounting position vertical	3RT 1023-1AC20 Nachfolger: 3RT 2023-1AC20	6K3		61112701 65656401	420010	Origin Label
e164	contactor AC-3 4KW/400 V 1N0, AC24V, 50/60 Hz 3-pole, size S00 screw connection (preferred type)	3RT 1016-1AB01	4K1		65656501	420011	Origin Label
e166	contactor AC-3 15 KW/400V AC 230V 50/60Hz 3-pole, size S2 screw connection (preferred type)	3RT 1034-1AC20	9K3		65659001	420063	Origin Label
e170	finder-relay - 14 pol.	55.34.8.024.0040	eg. 6K4		65583001	402004	
e171	finder-relay-socket - 14 pol.	94.04.0	eg. 6K4		65586101	402742	
e180	cabinet heater 230V/45W spring connection, for mounting rail 35mm UL approval	HG140	5E2		657987B01	445901	

number	description	type	electrical item designation	number scheme	SAP	PDS	remarks
e182	relay (plug in relay) 24 VAC 8 pol. 2-polig (Finder) without LED	40.52.8.024.00.00	8K1-6		65582701	402001	
e183	LED with Varistor 6..24V AC/DC (Finder)	99.02.0.024.98	8K1-6		65588101	402811	
e190	frequency inverter 2,2 KW, 5,3A	CIMR-E7-C42P21 without EMV filter	11U1		65963601	464701	Origin Label
e191	line filter for KPC 107/108/115	FS5972-10-07	11A1		65964101	464735	Origin Label
e190a	Frequency inverter 2,2kW (replacement Kit)	V1000 & incl. net filter EMV C1	11U1& 11A1		928055		
---	remote control panel (EB1546) own making	EB1546			66628301	807201	without picture