

Filling Procedure – cBoxX Open Loop Chiller

This procedure outlines two approved methods for filling the cBoxX open loop chiller:

- **Option 1:** Filling directly into the top of the tank (pump-assisted)
- **Option 2:** Filling through the bottom connection port (pump-assisted)

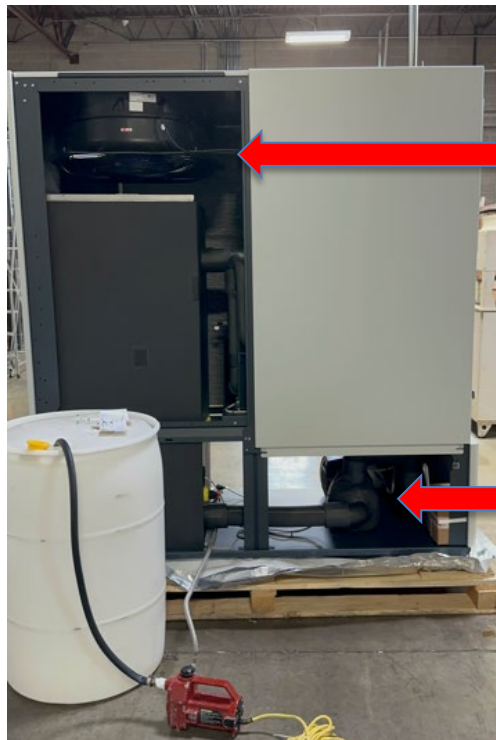
⚠ Before You Begin

- Ensure the chiller is **powered OFF**.
- Use clean, properly mixed fluid – **GE Healthcare-specified KKT Protect premixed ethylene glycol (37%)**.
- Confirm all **piping, valves and hoses** are securely connected and leak-free.

A Option 1: Fill from the Top of the Tank (Pump-Assisted)

Recommended procedure for preparing the system prior to commissioning

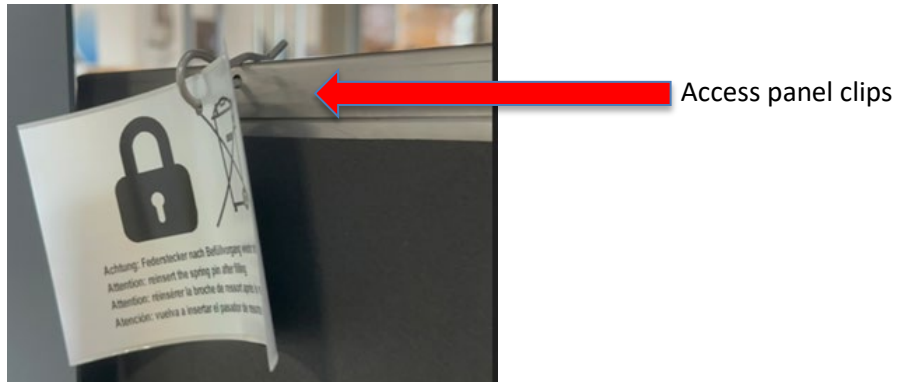
1. Remove service access panels.



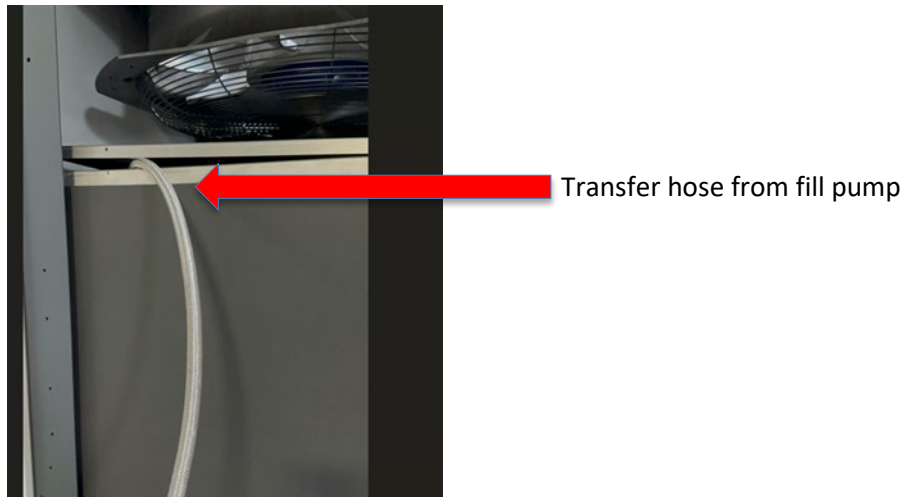
Remove top left service panel

Remove bottom service panel

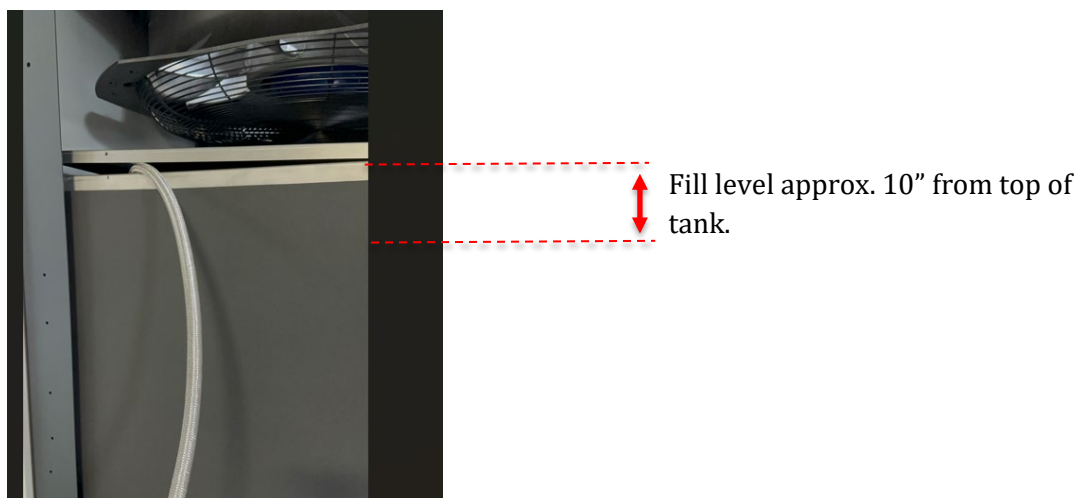
2. Remove the **access panel clips** securing the tank cover.



3. Use a **transfer hose from the fill pump** to slowly fill fluid directly into the tank.



4. Monitor the fluid level visually until it reaches **approximately 10 inches from the top of the tank**.



5. Once filled, **re-secure the tank cover** using the access panel clips.
6. *(For certified KKT service providers only)* Power on the chiller and check for fluid circulation. Top off if necessary after initial air purge.

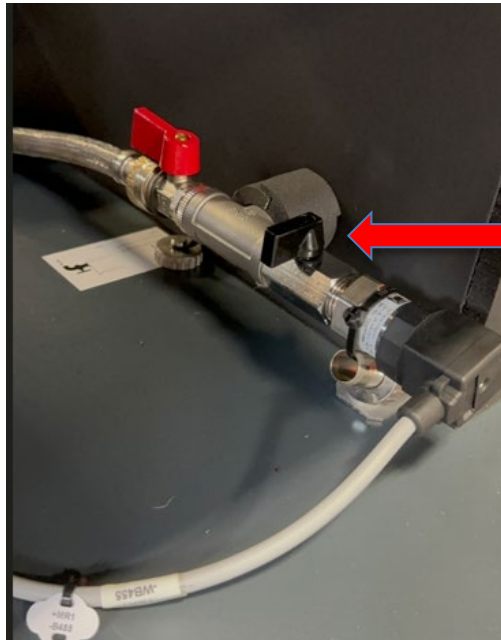
B Option 2: Fill via Bottom Connection Port (Pump-Assisted)

1. Connect the **outlet of your fill pump** to the **bottom connection port** with the **red-handled ball valve** (keep valve closed initially).



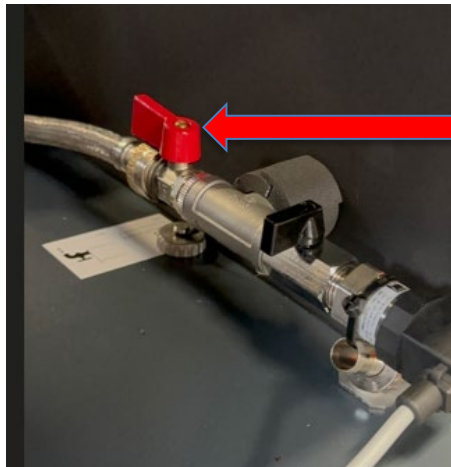
bottom connection port with the red-handled ball valve. **Note: 3/8" BSPP male threaded connection**

2. Close the **black-handled ball valve** to protect the tank pressure sensor.



black-handled ball valve

3. Confirm the **red-handled valve is closed**, then momentarily start the pump to pressurize the line.
4. Slowly **open the red-handled valve** to begin filling.



red-handled ball valve

5. Keep the pump running until the fluid level is **approximately 10 inches from the top** of the tank.
6. **Close the red-handled valve** and shut off the pump.
7. **Open the black-handled valve** to allow normal flow to the tank pressure sensor.
8. *(For certified KKT service providers only)* Power on the chiller and confirm circulation.
9. *(For certified KKT service providers only)* Recheck fluid level after several minutes of runtime and top off as needed.